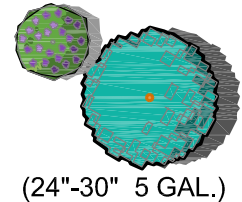
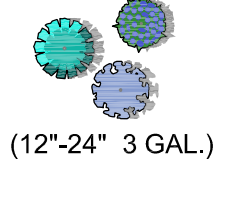
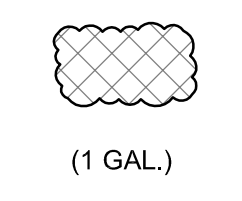
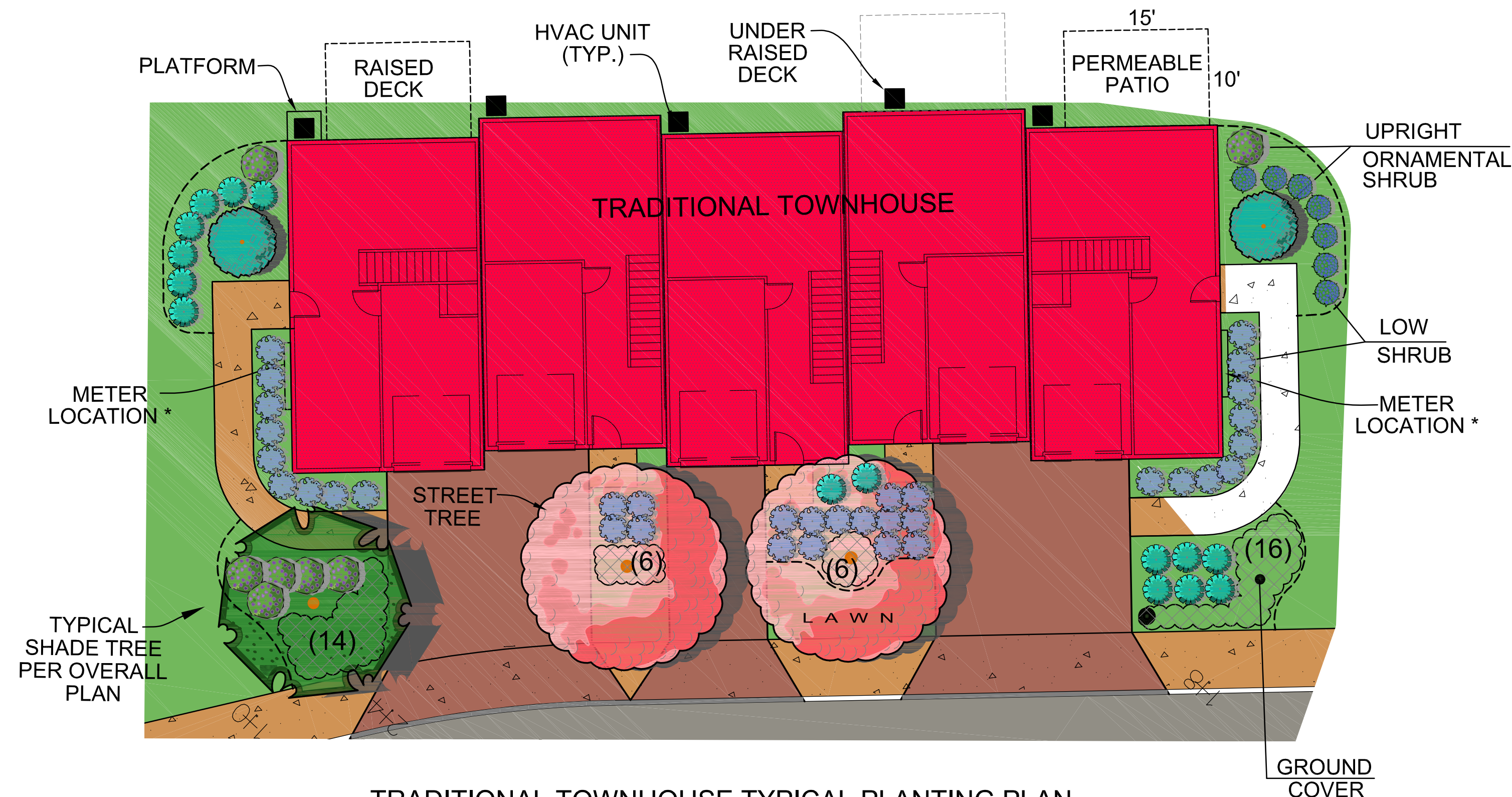


STACKED TOWNHOUSE TYPICAL PLANTING PLAN
SCALE 1"=10'

TYPICAL UNIT PLANTING PLAN - PLANT SCHEDULE (FOR DETAILS SHOWN BELOW)	
UPRIGHT ORNAMENTAL SHRUB  (24"-30" 5 GAL.)	- HYDRANGEA INVOLUCRATA - BLUE BUNNY - BRACED HYDRANGEA - WEIGELA VARIEGATA - VARIEGATED WEIGELA - KNOCKOUT ROSE - VIBURNUM CARLESII - KOREAN SPICE VIBURNUM - PRUNUS LAUROCERASIS 'SCHIPKAENSIS' - SKIP LAUREL
	MINIMUM PER BUILDING A 4 B 2 C 2 D 2 E 2 F 4 G 4
LOW SHRUB  (12"-24" 3 GAL.)	- BUXUS - MICROPHYLLA KOREANE X SEMPERVIRENS 'GREEN GEM' - GREEN GEM BOXWOOD - SPIREA BUMALDA 'ANTHONY WATERER' - 'ANTHONY WATERER' SPIREA - ITEA VIRGINIA 'LITTLE HENRY' - LITTLE HENRY SWEETSPIRE - JUNIPERUS SARGENTI - SARGENT JUNIPER - WEIGELA FLORIDA 'MYMONET' MYMONET DWARF WEIGELA - PENNISETUM ALOPECUROIDES 'LITTLE BUNNY' - LITTLE BUNNY FOUNTAIN GRASS
	MINIMUM PER BUILDING A 67 B 31 C 42 D 42 E 31 F 85 G 65
GROUND COVER  (1 GAL.)	- LIRIOPE VARIEGATA - VARIEGATED LILYTURF - HEMEROCALLIS - DAYLILY VARIETIES - GERANIUM X HIMALAYENSE 'ROZANNE' - ROZANNE HARDY GERANIUM - HOSTA VARIETIES - NEPETA - 'BLUE WONDER' - CATMINT - RUDBECKIA F. GOLDSTURM - BLACK EYED SUSAN
	MINIMUM PER BUILDING A 42 B 30 C 36 D 36 E 30 F 48 G 42



TRADITIONAL TOWNHOUSE TYPICAL PLANTING PLAN
SCALE 1"=10'

- NOTES:
1. TYPICAL METER LOCATION- LAYOUT MAY VARY, SUBJECT TO UTILITY COMPANY REVIEW AND REGULATIONS.
 2. HVA2 UNIT
 - ONE PER TOWNHOUSE
 - ALTERNATE LOCATIONS
 - DETAILED LAYOUT AT FINAL SITE PLAN APPLICATION
- A. ADJACENT TO PATIO.
 B. GROUPED ALONG REAR BUILDING SIDES WHEN NO CONFLICT WITH LANDSCAPING.
 C. WHERE DECKS, PROVIDED UNDER DECKS.
 D. WHERE TOWNHOUSE BACKS TO SLOPE, ON HVAC UNIT PLATFORM.

NO.	DESCRIPTION	DATE

CREST
 Engineering Associates Inc.
 Civil & Environmental Engineers
 Professional Planners - Surveyors - Landscape Architects
 • CERTIFICATE OF AUTHORIZATION NO. 240427989300 •

DATE	4/6/20
SCALE	1"=20'
DRAWN	SH
CHECKED	
SHEET	OF
POCKET	

PRELIMINARY SITE PLAN
LOTS 1.01 & 2.01
BLOCK 426
 (TAX MAP SHEETS No. 121 & 127)
 BOROUGH OF SAYREVILLE
 MIDDLESEX COUNTY, NEW JERSEY

DISPLAY